

# jD-External HMC5883 Compass Guide

Store: [http://store.jdrones.com/Pixhawk\\_ExtCompass\\_HMC5983\\_p/jdmagneto02.htm](http://store.jdrones.com/Pixhawk_ExtCompass_HMC5983_p/jdmagneto02.htm) (the new HMC5983 version)



## *jD-External HMC5883 Compass*

External compass? Why? and How?

External compass is required in cases if your multicopter has high levels of magnetic interference. Interference can come from your power distribution, power cables, ESCs and many other electronic sources.

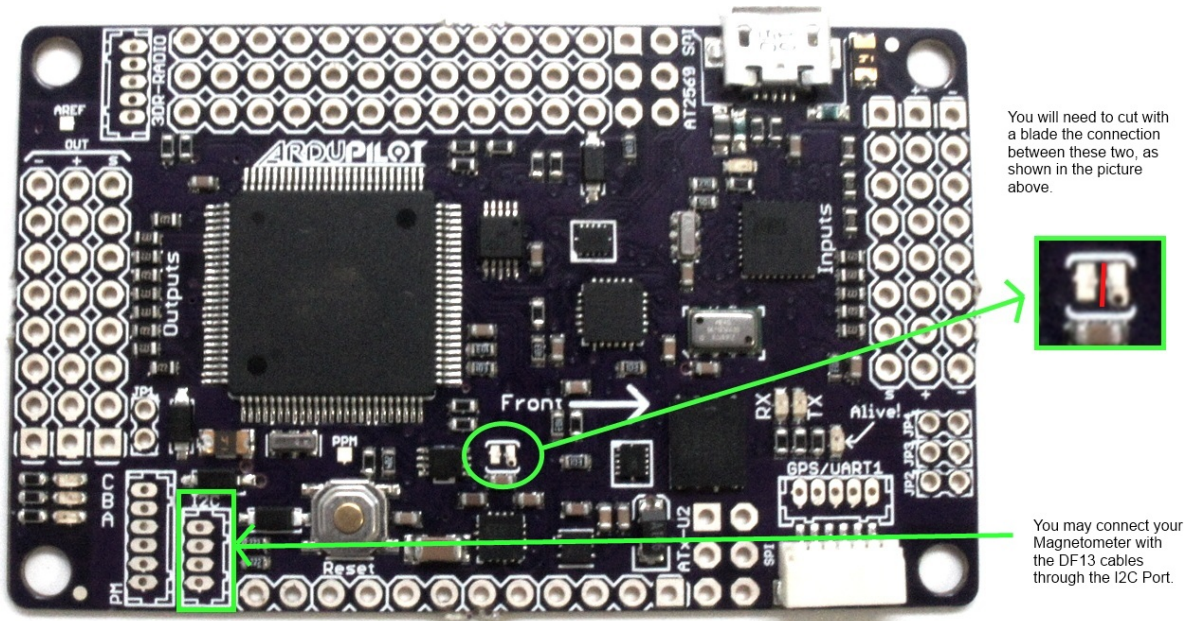
Sometimes it's difficult to mount your flight controller far from high power electronics but with External Compass you can do that easily. Just mount flight controller where you want and move compass further.

This type problems are more common in Multicopters. Not so common in Airplanes.

## ***Connection***

How to connect external compass to your APM Flight controller.

If you have APM2.5x you need to disable internal compass. You need to cut small trace on internal compass enable/disable jumper. Use Xacto or similar small knife to do this. But remember not to push too hard.

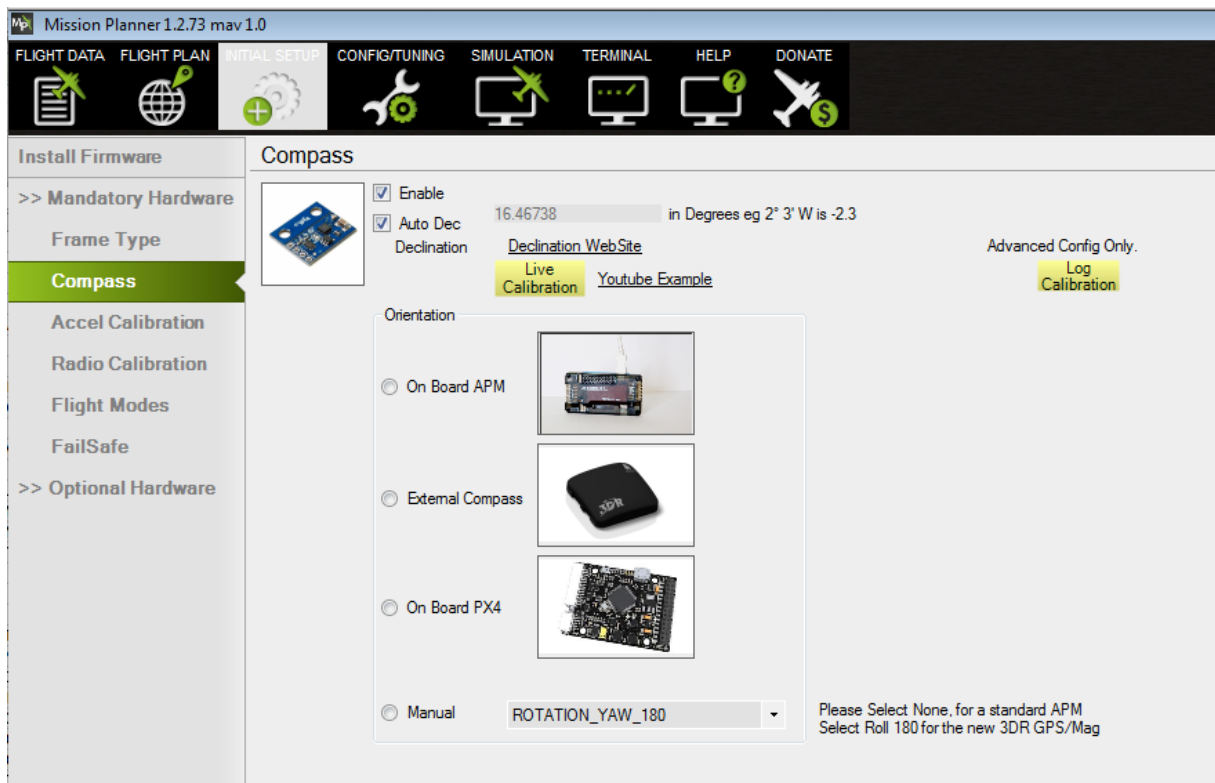


### APM Compass modification

After you have connected jD External Compass to your APM board, connect to Mission Planner and choose correct orientation for your compass board.

If your compass is mounted as components up, connector forward = same as "On Board APM"

If your compass is mounted as components down, connector forward = same as "External Compass"



Compass selection screen on MP

© 2016 jnMechanics

[www.jnmechanics.com](http://www.jnmechanics.com)

[www.jdrones.com](http://www.jdrones.com)